

# Furniture Catalog

2026



# Where Comfort Meets Style



# Couches



### 2-SEATER - FIXED CUSHION

Light grey material - upholstered.  
Sturdy solid wood frame.  
Strong block legs

1530(w) x 800(h) x 800(d)

**R2 950**

Various fabric colour options available.  
See page 13 for more detail.

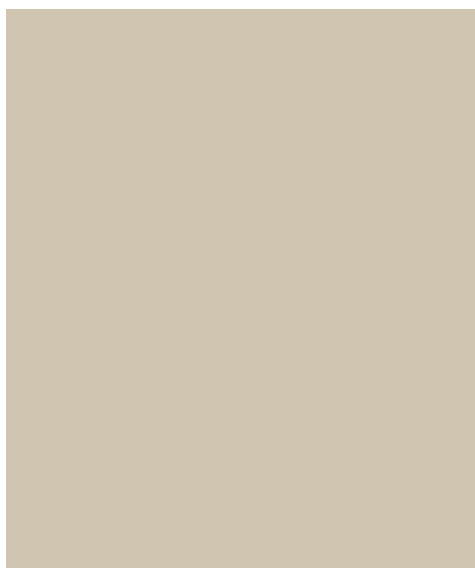
### L-SHAPE - FIXED CUSHION

Light grey material - upholstered.  
Sturdy solid wood frame.  
Strong block legs

2200(w) x 800(h) x 800(d)

**R6 950**

Various fabric colour options available.  
See page 13 for more detail.





### 3-SEATER - FIXED CUSHION

Light grey material - upholstered.  
Sturdy solid wood frame.  
Strong block legs

2200(w) x 800(h) x 800(d)

**R3 750**



Various fabric colour options available.  
See page 13 for more detail.



### 1-SEATER - FIXED CUSHION

Light grey material - upholstered.  
Sturdy solid wood frame.  
Strong block legs

1100(w) x 800(h) x 800(d)

**R2 150**



Various fabric colour options available.  
See page 13 for more detail.





### 2-SEATER - FIXED CUSHION

Light grey material - upholstered.  
Sturdy solid wood frame.  
Strong block legs

1530(w) x 800(h) x 800(d)

**R2 950**

Various fabric colour options available.  
See page 13 for more detail.



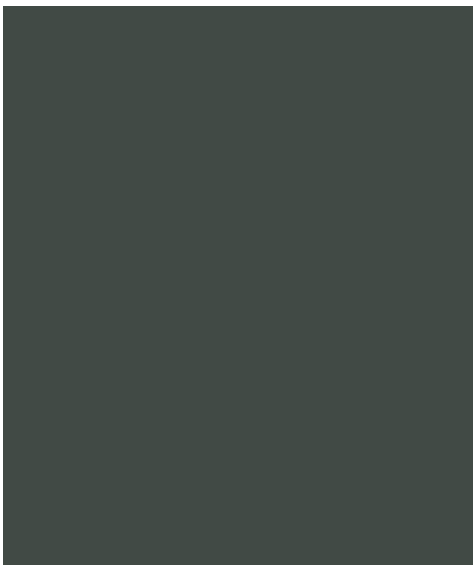
### 2-SEATER - LOOSE CUSHION

Light grey material - upholstered.  
Sturdy solid wood frame.  
Strong block legs

1530(w) x 800(h) x 800(d)

**R3 750**

Various fabric colour options available.  
See page 13 for more detail.





### 2-SEATER - FIXED CUSHION

Blue material - upholstered.  
Sturdy solid wood frame.  
Strong block legs

1530(w) x 800(h) x 800(d)

**R2 950**

Various fabric colour options available.  
See page 13 for more detail.



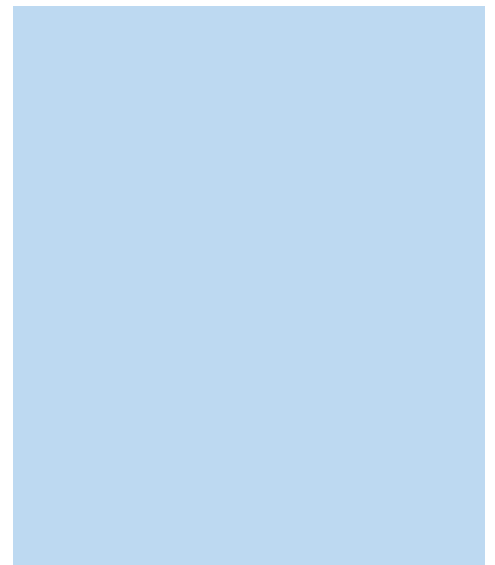
### 2-SEATER - FIXED CUSHION

Red material - upholstered. Sturdy  
solid wood frame.  
Strong block legs

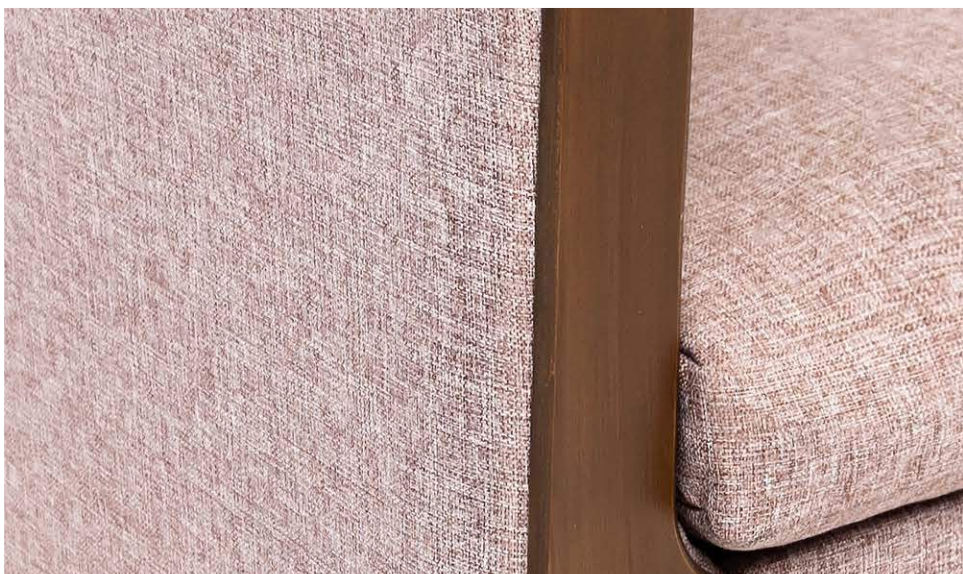
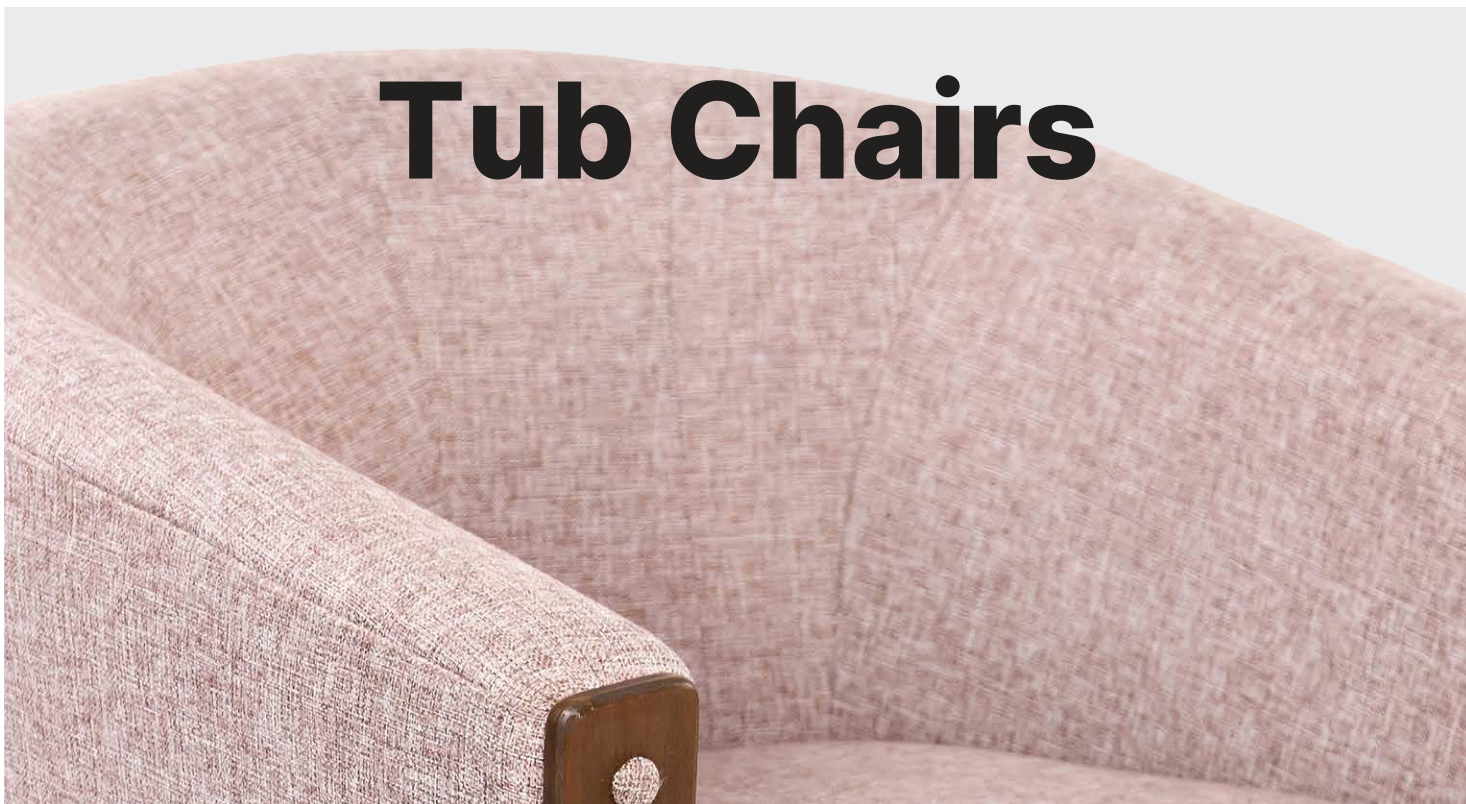
1530(w) x 800(h) x 800(d)

**R2 950**

Various fabric colour options available.  
See page 13 for more detail.



# Tub Chairs



## TUB CHAIR

Various colour options available.  
Solid Wood Frame  
Sturdy design  
Wide selection of fabrics

700(w) x 780(h) x 700(d)

From **R2 000\***

\*Price depends on fabric choice

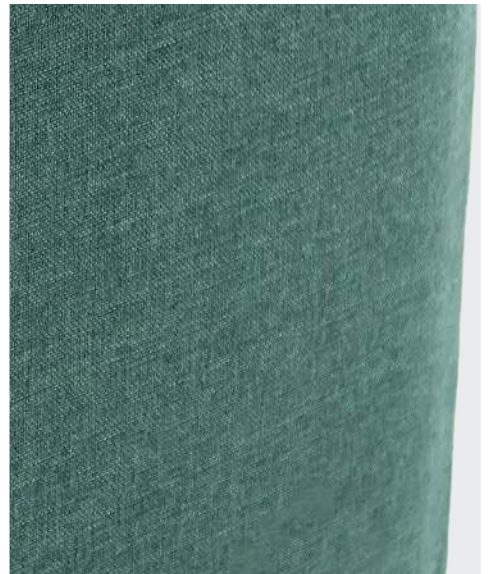
Various fabric colour options available.  
See page 13 for more detail.





Various fabric colour options available.  
See page 13 for more detail.

# Ottomans



## OTTOMAN

Various colour options available.  
Solid Wood Frame  
Sturdy design  
Wide selection of fabrics

420(w) x 420(h) x 420(d)

**R375**

Various fabric colour options available.  
See page 13 for more detail.



## Colour Options

You have the freedom to choose more than 70 fabric options for couches, tub chairs and ottomans. Kindly contact us to confirm the availability of fabric and price implications.



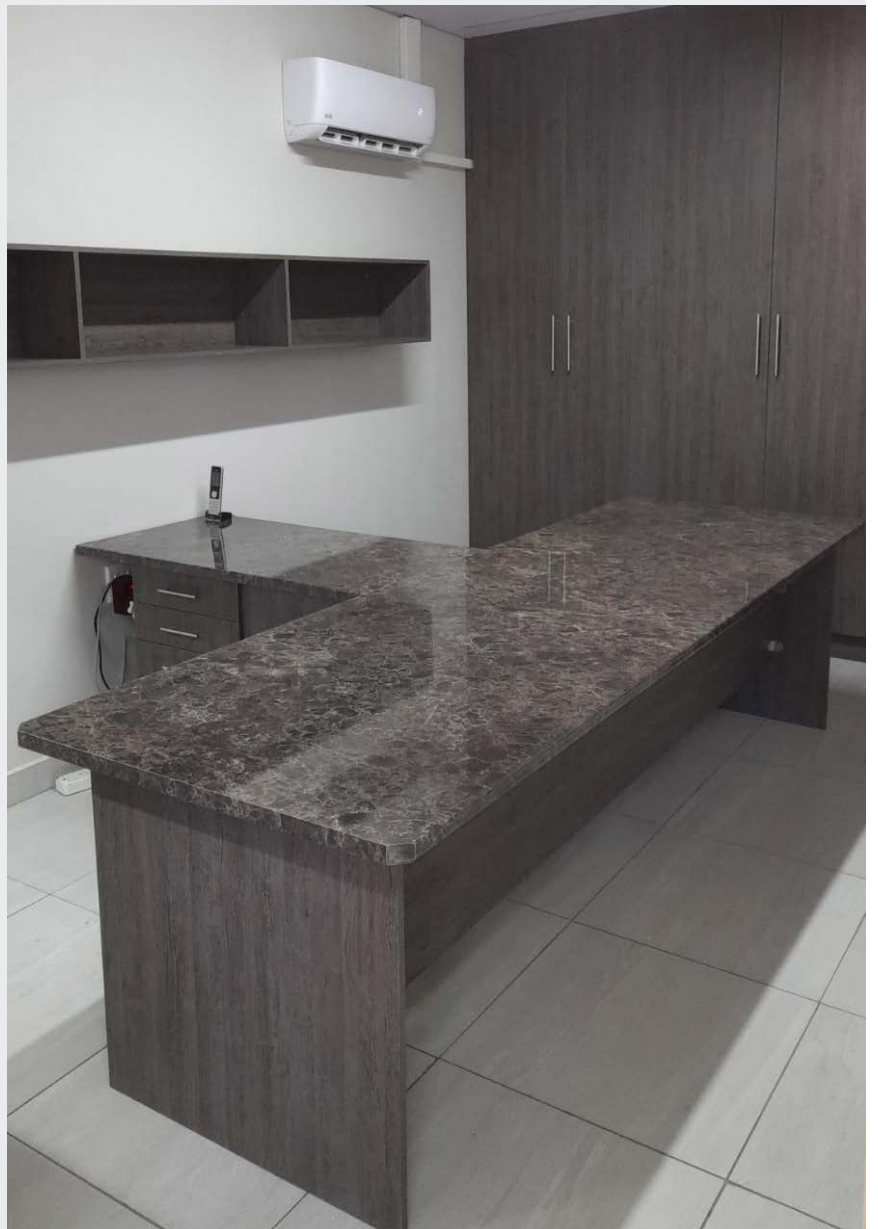
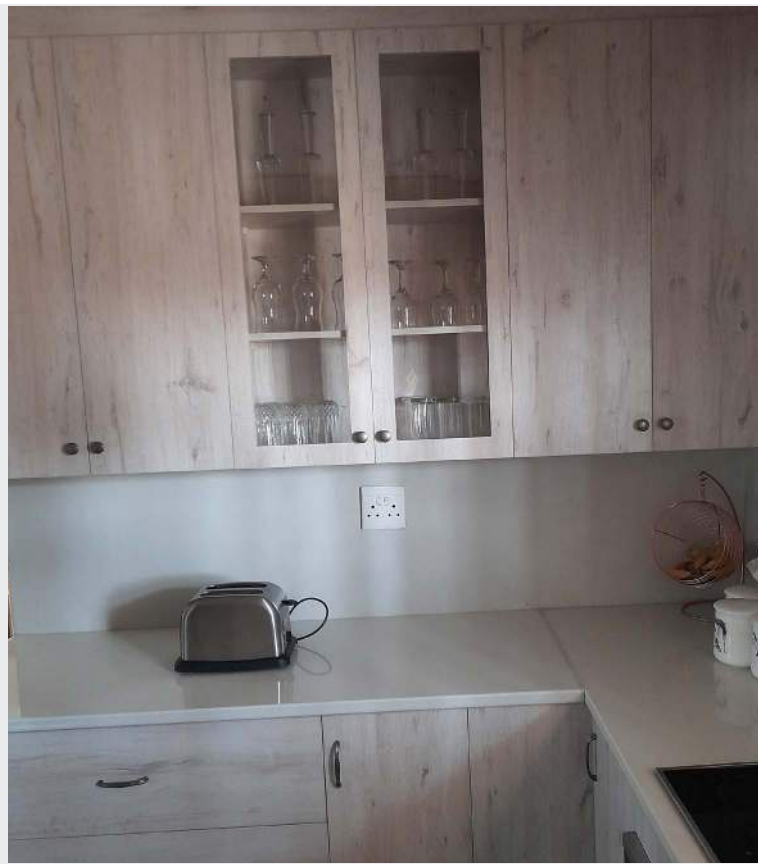


# Cupboards















**Contact**  
**Name: Martin Britz**  
**Number: 061 775 5050**



## Terms & Conditions

### Orders and Acceptance

Orders are offers; acceptance occurs via written confirmation, invoice, or commencement of production. The Manufacturer may reject/cancel orders (e.g., stock unavailability, pricing errors). Custom/made-to-order items are binding once specs are approved.

### Pricing, Deposits, and Payment

Prices include VAT unless stated otherwise. Quoted prices valid for a set period (e.g., 30 days). A deposit will be raised especially on any custom made orders. Balance: Due before delivery/collection (or on approved credit terms). Full payment required before dispatch/delivery.

### Delivery and Risk

Delivery estimates are not guaranteed; delays excused for force majeure (e.g., shortages, strikes, transport issues). Buyer responsible for access, unloading, and inspection. Seller not liable for third-party carrier damage/delays. Additional charges for failed deliveries or special access (e.g., stairs, remote areas). Delivery only in the Bloemfontein city borders. Additional delivery charges will be invoiced.

### Custom / Made-to-Order Furniture

Custom items (e.g., specific fabrics, sizes, designs) are non-cancellable/non-returnable once production starts or deposit paid. Buyer must approve specs/quotations accurately; changes incur extra costs/time. Natural variations in wood, leather, fabric, or handmade elements (e.g., grain, knots, markings) are not defects.

### Inspection and Acceptance

Buyer must inspect goods on receipt and notify in writing of visible damage/defects (within 7 days). Failure to notify may waive claims for obvious issues.

### Warranty / Guarantee

Within 6 months of delivery: If defective/unsafe/inferior, Buyer may return (at Seller's risk/cost) for repair or replacement. Manufacturer's limited warranty: 1 year on frame/structure. Exclusions: Normal wear/tear, misuse, improper care (e.g., sun exposure, moisture), commercial use (if domestic-rated), accidents, or modifications. No liability for consequential damages.

### Returns, Cancellations, and Refunds

Defective goods: 6-month right to return/repair/replace/refund.  
Custom/personalised items: Non-returnable/non-refundable.  
Cancellations: Possible before production; deposit may be forfeited for costs incurred.

### Title and Ownership

Ownership passes on full payment. Seller retains title until paid in full (even if delivered).